

klaarblyklik spoedig beseft dat Kimberley inderdaad dié Diamantstad van die Republiek is.

Op 22 Mei 1990 is Regter-president Kriek op gepaste wyse deur Regter Steenkamp, die leier van die plaaslike Balie, die voorsitter van die plaaslike Prokureursorde en die Adjunk-prokureur-generaal welkom geheet.

Regter-president Kriek is op 4 Februarie 1960 as advokaat toegelaat, het op 13 Mei 1970 senior status verwerf en is op 1 Februarie 1973 op die Natalse regbank aangestel.



Regter-president JJ Kriek
.....

Nuwe lid

Johan Olivier wat die laaste Balie-eksamen suksesvol afgelê het, is die jongste toevoeging tot die Noord-Kaapse Balie.



Johan Olivier
.....

Johan het, voordat hy hom by die Balie aangesluit het, as senior staatsadvokaat op die personeel van die plaaslike Prokureur-generaal diens gedoen en het vir 'n aansienlike tyd as senior staatsaanklaer waargeneem.

Die Noord-Kaapse Balie is tans 9 lede sterk.

Eastern Cape

Appointment to Bench

Judge AP Burger was appointed to the Eastern Cape Bench in January 1990 in an acting capacity. On 16 July 1990 Theodor Grobbelaar from the Pretoria Bar was appointed to the Eastern Cape Bench and seconded to the Transkei whilst Roger Dyason Claassen, also from the Pretoria Bar, was appointed in an acting capacity and seconded to the Ciskei.

Senior status

Op 24 April 1990 is JC Froneman en LE Leach by die Grahamstad-Balie, en CJ Mouton by die Port Elizabeth-Balie, tot senior status verhef.

Nuwe lede

PG Beningfield het in Julie 1990 by die Port Elizabeth-Balie begin praktiseer nadat hy sukses in die eksamen behaal het.

Pupils

There are again five new pupil members at the Port Elizabeth Bar after only one of the five previous pupils passed the June examination. There are two pupils in Grahamstown, the previous pupil having been unsuccessful in June. The present complement of the Port Elizabeth Bar is 30 members and of the Grahamstown Bar 20 members.

New Supreme Court

After many months of waiting, the new Supreme Court in Port Elizabeth has finally become functional although not yet officially opened. The official opening takes place on 8 October 1990 with the Minister of Justice officiating.

Ciskei

The Bench

There has been one addition to the Bench. With effect from 1 August 1990, acting Judge RD Claassen, formerly a member of the Pretoria Bar, has been appointed to the Ciskei Bench.

A cocktail party was arranged by the Bar to welcome Judge Claassen on 6 August 1990, which was attended by the Chief Justice, the other judges, and all the members of the Bar.

The Bar

LS Kalimashe left the Bar to take up a lecturing post at Fort Hare University.

Mrs SA Collett, a member of the Pietermaritzburg Bar, has joined the Ciskei Bar and now holds dual Chambers in Bisho and Pietermaritzburg.

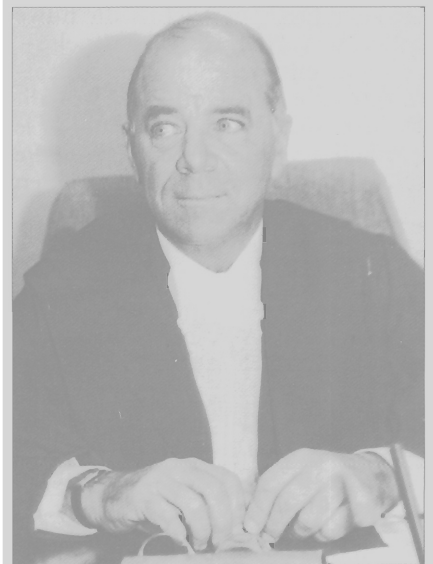
MC Jardine has been appointed Chairman of a Commission established by the Ciskei Government to enquire into alleged irregularities committed during the previous government's term of office. T Deva Pillay has been appointed as an Assistant Commissioner.

A Theron has been appointed Chairman of the State Trust Board, also established by the present government.

Bophuthatswana

Appointment to the Bench

Mr Justice HN Hendler, formerly of the Namibian Supreme Court, has been appointed to the Bench in Bophuthatswana.



Mr Justice HN Hendler
.....

New members

During the past year, the Bar gained two new members, Mrs B Nkabinde and Mr E Mmolawa.

There are eight advocates practising at the Bar in Bophuthatswana.